



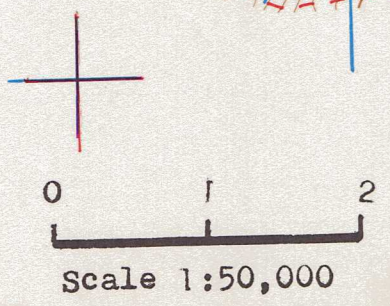
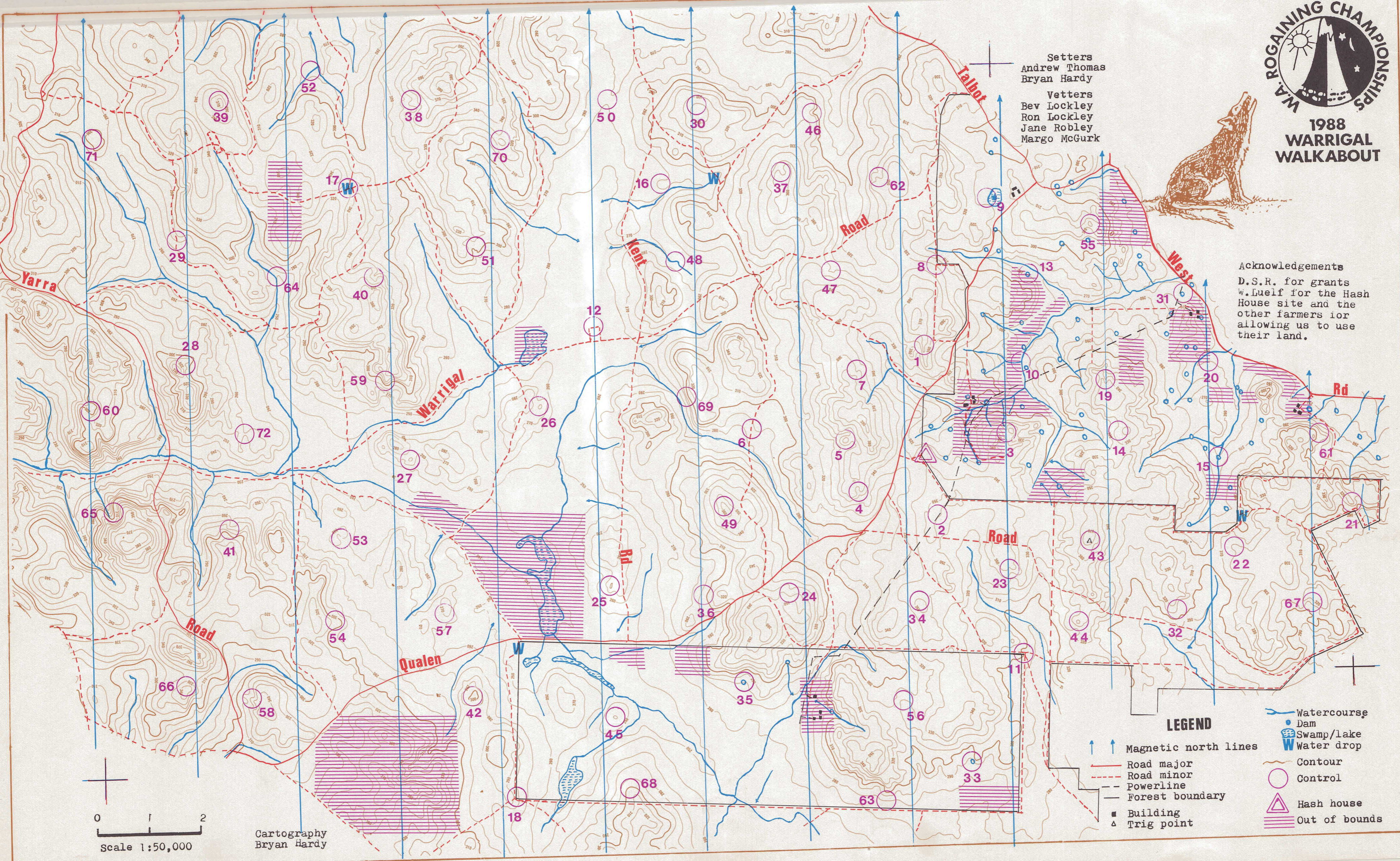
1988 WARRIGAL WALKABOUT

Setters
Andrew Thomas
Bryan Hardy

Vetters
Bev Lockley
Ron Lockley
Jane Robley
Margo McGurk



Acknowledgements
D.S.R. for grants
w. Luelf for the Hash
House site and the
other farmers for
allowing us to use
their land.



Cartography
Bryan Hardy

LEGEND

	Magnetic north lines		Watercourse
	Road major		Dam
	Road minor		Swamp/lake
	Powerline		Water drop
	Forest boundary		Contour
	Building		Control
	Trig point		Hash house
			Out of bounds

WARRIGAL WALKABOUT

1988 W.A.R.A. STATE CHAMPIONSHIPS
AUGUST 27/28

Control No	Points	Description	Control No	Points	Description
1	20	The Spur	37	60	The Gully, at a watercourse junction
2	20	A Power pole, then 105m @ 323°	38	60	The Gully, the head of, West side of a 2m boulder cluster
3	20	Foot of 8m boulder, N E corner of group of large boulders	39	60	The Summit, North end
4	20	The Gully	40	60	A Gully junction
5	20	The Knoll	41	60	A Rock surface, 200m X 300m, South side
6	20	A Blazed tree, then 110m @ 66°	42	60	The Summit, North East part
7	30	The Gully, on a watercourse	43	70	The Trig point
8	30	The Track junction, then 60m @ 270°	44	70	The Knoll
9	30	The Lake, West side, on a fence	45	70	The knoll
10	30	The Creek junction	46	70	The Gully,
11	30	A Blazed tree, then 135m @ 223°	47	70	The Gully, on a watercourse bend
12	30	Between the tracks	48	70	The Creek bend
13	40	The Dam, N E corner	49	70	The Summit
14	40	The Broad spur, on a fence	50	70	The Broad saddle
15	40	The Dam, North side	51	70	A Clearing, 100m X 60m, South side
16	40	The Spur	52	70	The Shallow gully
17	40	The Western track junction, then 220m @ 42°	53	70	The Shallow gully
18	40	The Fence corner, then 200m @ 50°	54	70	The Spur
19	50	The Gully, at a watercourse junction	55	80	The Rocky knoll
20	50	A Fence junction	56	80	The Broad spur
21	50	The Rocky summit, South end	57	80	The Knoll
22	50	The Spur, South part	58	80	The Spur, on top, in a group of 4m boulders
23	50	The gully, North edge of a clearing 40m X 20m	59	80	The Spur, on a 20m X 10m rock surface, South end
24	50	The Gully, West part, South side of 3m boulders	60	80	A Rock surface, 100m X 50m, South edge
25	50	The Rocky knoll	61	90	The Spur, in a group of 2m boulders
26	50	The Knoll, East part	62	90	The Gully
27	50	The Knoll	63	90	Between two 1.5m boulders
28	50	The Shallow gully	64	90	A Clearing, 80m X 40m, East side
29	50	A Blazed tree, then 250m @ 270°	65	90	In a group of 2.5m boulders
30	50	The Broad summit, North part	66	90	The Summit
31	60	The Dam, on a cocky's climbing frame	67	100	A Rock surface, North end
32	60	A Rocky knoll, East end	68	100	A Shallow gully, head of, South side of a 1.2m boulder
33	60	The Dam, South West corner	69	100	A Cliff, 6m, at the foot of
34	60	The Knoll, North part	70	100	The Saddle
35	60	A Creek junction	71	100	The broad summit, North part
36	60	A Large rock surface, Western edge	72	100	The low saddle